

# Antenna Model Nomenclature

## Reference Guide



### Antenna model nomenclature

All NWA<sup>TM</sup> antennas contain 13 characters:

**MX08FRO660-02**

(example model number)

|            |                             |
|------------|-----------------------------|
| <b>M</b>   | <b>Product series</b>       |
| <b>X</b>   | <b>Polarization</b>         |
| <b>08</b>  | <b>No. of antenna ports</b> |
| <b>FRO</b> | <b>Product feature</b>      |
| <b>6</b>   | <b>Package</b>              |
| <b>60</b>  | <b>Horizontal beamwidth</b> |
| <b>02</b>  | <b>Variant</b>              |

### NWA antenna nomenclature: label categories

#### Product Series

M = macro

C = cylinder

S = stadium

D = DAS

#### Polarization

V = vertical

X = X-Pol

C = circular

#### No. of antenna ports

2, 4, 6, 8, 10, 12

#### Product feature

FRO = Fast Roll Off

FIT = Form In Tighter

OMI = Omni

TRI = Trisector

#### Length (ft)

8, 6, 4, 2, 1

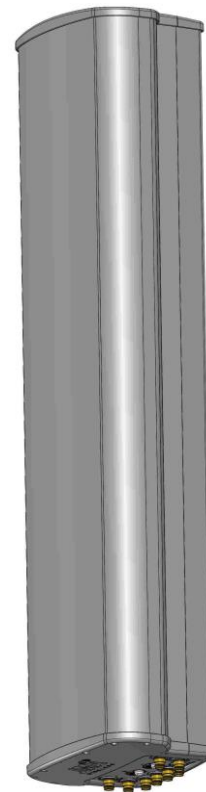
#### Horizontal beamwidth

xx – represents horizontal beamwidth in degrees

#### Variant

xx – specific variant details can be found in product datasheets

e.g., 02 = RET with Smart Bias Tee and external AISG ports



**NWA<sup>TM</sup>**

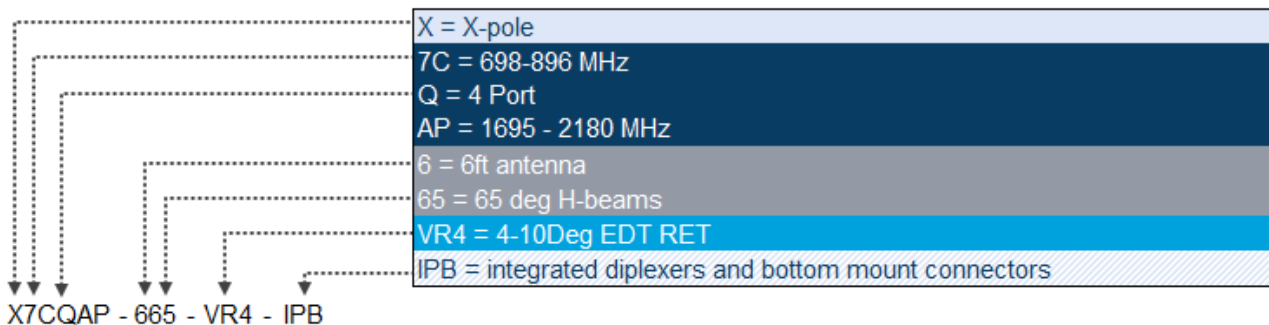
## Antenna model nomenclature

All legacy antennas contain 15 characters:

# X7CQAP-665-VR4-IPB

(actual model label)

|            |                                 |
|------------|---------------------------------|
| <b>X7C</b> | <b>Antenna type</b>             |
| <b>7C</b>  | <b>Band</b>                     |
| <b>Q</b>   | <b>No. of antenna ports</b>     |
| <b>AP</b>  | <b>Band</b>                     |
| <b>6</b>   | <b>Antenna length (ft.)</b>     |
| <b>65</b>  | <b>Horizontal beamwidth (°)</b> |
| <b>VR4</b> | <b>Electrical downtilt</b>      |
| <b>IPB</b> | <b>Options</b>                  |



example:

**X7CAP-665-VR4-IPB**

Description: X-pol antenna, 698-896 & 1710 - 2170 MHz, 6ft, 65 deg. H-beam, with 2 degree EDT on low-band (698-896) and 4 degree EDT on high band (1710-2170) with integrated diplexer and bottom DIN connectors

# Antenna Model Nomenclature

## Reference Guide



### Antenna nomenclature: label categories

#### Antenna type

X = cross X-Pol

C = circular pole

V = vertical pole

MB = Multi-Beam (X-Pol x 2)

TB = Tri-Beam (X-Pol x 3)

HB = Hex-Beam (X-Pol x 6)

FRO = Fast Roll Off antenna

CYL = cylinder antenna

FLG = flagpole antenna

#### No. of antenna ports

Q = four-port (MIMO)

#### Band

7 = antenna operates in 698 - 800 MHz (700)

E = antenna operates in 698 - 945 MHz

G = antenna operates in 698 - 960 MHz

C = antenna operates in 824 - 896 MHz (Cellular)

A = antenna operates in 1710 - 2170 MHz (AWS). Some models confirmed for AWS-3 (1695-2180 MHz)

P = antenna operates in 1850 - 1990 MHz (PCS)

W = antenna operates in 1710 - 2360 MHz

U = antenna operates in 1695 - 2700 MHz

#### Antenna length (ft.)

#### Horizontal beamwidth (degrees)

#### Electrical downtilt (in degrees, where "x" is low-band and "y" is high-band)

#### Options

IP = the antenna contains an integrated or pass-through diplexer

I = integrated diplexer, no pass through

N = N type connector(s) (NOTE: if no "N" 7/16 DIN connectors are standard)

M = Mini-DIN female connector(s) (currently for Tru-Omni & Omni-MIMO only. Without "M" = N connectors )

BOT = bottom mounted 7/16 DIN connector(s)

IPB = integrated diplexer and bottom mounted 7/16 DIN connector(s)

I7C = integrated diplexer for 698 - 800 // 824 - 896 (700MHz // cellular)

VRX = variable EDT with Remote Electrical Tilt (RET) motor

VF = variable EDT with flexible tilt range for low-band and high-band. Refer to model specification.

VM = variable EDT with manual adjust wheel